



SoundEar®3

Measure, monitor and manage
the noise with SE3-310

SoundEar®3 - 310 Specifications

Parameters:	Measures 3 measurements simultaneously LAF; LAS; LCpeak; Laeq 1s, Laeq 1/4 h, Laeq 1/2h, Laeq 1 h.
Resolution:	0,1 dB for all parameters
Measuring Ranges:	RMS: Total 30 - 120 dB
Deviation:	+/- 0,5 dB
Frequency Range:	20Hz- 20 kHz
Frequency Weightings:	A- weighting (RMS), C-weighting (Peak)
Time Weighting:	Slow(1S) & Fast (125 ms)
Dynamic Range:	90 dB and peak detection
Light setting:	full configurability through Soundear software including nightsetting.
2 x outputs :	0-10 V or 4-20 mA
2 xUSB outputs:	Micro USB (power & PC) , USB OTG (Log, configuration)
Display setting:	LAS max, Leq (A)15, Alarm settings, Temperature & Clock
Power Supply:	5VDC (Micro USB) / 24VDC (Screw terminal)
Current Consumption:	max 2,5 W
Internal memory:	16 MB(128 Mbit) (5-90 days log time, depending on log settings)

Real Time Clock:	Hi-precision type with battery backup (CR2032)
Microphone:	20 Hz- 20 kHz
Measurement 300 - 310:	Length 256 mm, Width: 205 mm, Height: 45 mm, Weight: 1,5 kg
Standards:	IEC61672-2-2002, Type 2, ANSI 51,4 Type 260601-1: Medical elec- trical equipment- Part 1: general requirements for basic safety and essential performance. 60601-1-2_ Medical equipment - Part 1.2: General requirement - Part 1-2: General requirement for Basic safety and essential performance.
Connectivity accessories:	GSM module, 4 G module for Cloud solution



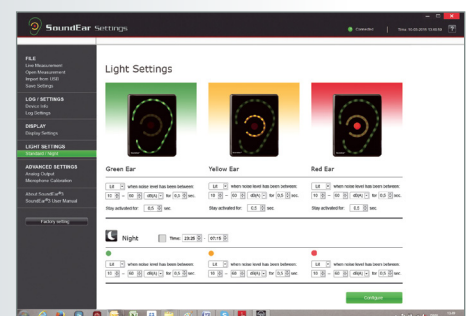
The mini display on SoundEar®3 - 300 and 310
is operated manually via the touch panel on the
front of the cabinet.



External microphone.



USB key for export of data.



SoundEar®3 software

SoundEar A/S
www.soundear.dk

